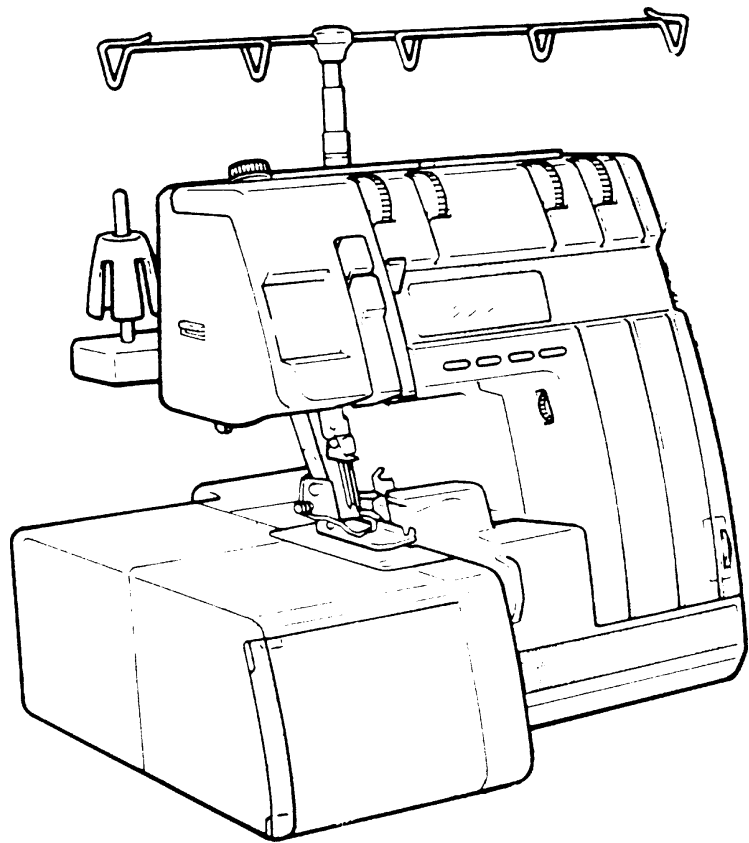
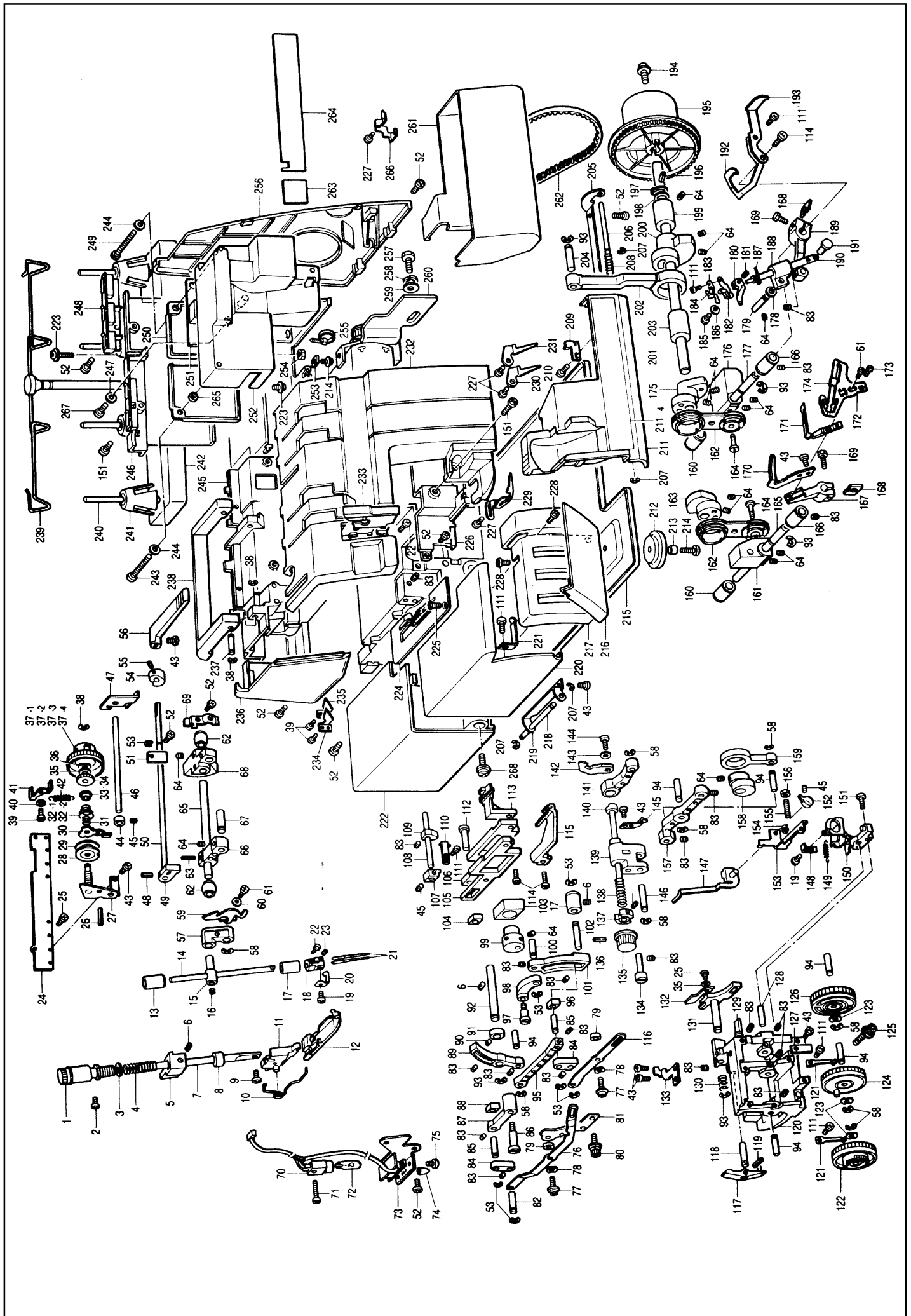


Spare Parts



Husqvarna Huskylock 680 CD

Pos	Part no	Description	Pos	Part no	Description
1	415 45 68-01	PRESSURE ADJUSTMENT DIAL	86	415 32 14-01	SCREW
2	415 45 69-01	SCREW	87	415 46 23-01	ADJUSTING LINK
3	415 45 70-01	WASHER	88	415 46 24-01	ADJUSTING BLOCK SHAFT
4	415 45 71-01	PRESSER ADJUSTMENT SPRING	89	415 46 25-01	DIFFERENTIAL LINK SHAFT
5	415 41 57-01	PRESSER BAR BRACKET	90	415 46 26-01	DIFFERENTIAL ADJUSTING LINK
6	415 41 58-01	SCREW	91	415 46 27-01	DIFFERENTIAL FEED ADJUST. BLOCK
7	415 41 56-01	PRESSER BAR	92	415 46 28-01	FEED BAR LEVER
8	415 41 59-01	Presser bar FELT	93	415 31 50-01	ScREW
9	415 30 34-01	SCREW	94	415 41 31-01	Stop ring
10	415 45 72-01	PRESSER FOOT SPRING	95	415 46 29-01	FEED BAR LEVER SHAFT
11	415 45 73-01	PRESSER FOOT HOLDER ASSEMBLY	96	415 32 59-01	STOP RING
12	415 47 93-01	PRESSER FOOT ASSEMBLY	97	415 46 30-01	FEED BAR LINK SHAFT
13	415 31 81-01	NEEDLE BAR BUSHING	98	415 46 31-01	FEED BAR LINK
14	415 45 75-01	NEEDLE BAR	99	415 46 32-01	FEED ADJUSTING BLOCK
15	415 31 80-01	NEEDLE BAR connecting STUD	100	415 46 33-01	FEED ECCENTRIC WHEEL SHAFT
16	415 45 76-01	SCREW	101	415 46 34-01	FEED LINK
17	415 45 77-01	NEEDLE BAR BUSHING, LOWER	102	415 46 35-01	FEED ECCENTRIC WHEEL
18	415 47 94-01	NEEDLE CLAMP	103	415 46 36-01	FEED LINK SHAFT
19	415 45 79-01	SCREW	104	415 46 37-01	FEED ADJUSTING LEVER
20	415 47 95-01	NEEDLE BAR THREAD GUIDE	105	415 46 38-01	FEED ADJUSTING LEVER SHAFT
21	401 60 96-01	Needles 5xNM90	106	415 46 39-01	VERTICAL FEED BLOCK
22	401 60 92-01	Needles 5xNM80	107	415 46 40-01	DIFFERENTIAL FEED BAR BLOCK
23	415 42 69-01	SCREW	108	415 46 43-01	FEED BAR GUIDE, LEFT
24	415 45 81-01	SCREW	109	415 46 41-01	DIFFERENTIAL FEED BAR
25	415 47 96-01	SCREW	110	415 46 42-01	MAIN FEED BAR
26	415 45 82-01	THREAD TENSION BRACKET	111	415 46 44-01	FEED BAR GUIDE SHAFT
27	415 30 99-01	SCREW	112	415 46 45-01	NEEDLE PLATE SUPPORTING COLLAR
28	415 45 83-01	SPRING PIN	113	415 46 46-01	FEED BAR GUIDE, RIGHT
29	415 45 84-01	THREAD TENSION BASE ASSEMBLY	114	415 34 73-01	SCREW
30	415 45 85-01	THREAD TENSION DISC A	115	415 46 47-01	FEED BAR SHAFT
31	415 43 52-01	TENSION DISC	116	415 46 48-01	MAIN FEED DOG
32	415 45 86-01	THREAD TENSION RELEASER	117	415 31 23-01	SCREW
33	415 45 87-01	THREAD TENSION SPRING SL	118	415 47 98-01	DIFFERENTIAL FEED DOG
34.1	415 45 88-01	THREAD TENSION SPRING	119	415 46 50-01	FEED ADJUSTING LINK C
34.2	415 45 89-01	THREAD TENSION SPRING	120	415 46 51-01	LOWER BLADE MOVABLE LEVER
35	415 45 90-01	THREAD TENSION SPRING WASHER	121	415 42 38-01	LEVER HOLDER SHAFT
36	415 45 91-01	THREAD TENSION NUT	122	415 42 40-01	SPRING PIN
37	415 45 92-01	WASHER	123	415 47 99-01	NEEDLE PLATE BASE
38	415 45 93-01	WAVEWASHER	124	415 46 53-01	DIAL GUIDE SPRING
39.1	415 45 94-01	THREAD TENSION DIAL (YELLOW)	125	415 46 54-01	DIFFERENTIAL FEED DIAL
39.2	415 45 95-01	THREAD TENSION DIAL (RED)	126	415 46 55-01	WAVEWASHER
39.3	415 45 96-01	THREAD TENSION DIAL (GREEN)	127	415 46 56-01	FEED DIAL
39.4	415 45 97-01	THREED TENSION DIAL (BLUE)	128	415 46 57-01	SCREW
40	415 33 97-01	STOP RING	129	415 46 58-01	LOWER BLADE DIAL ASSEMBLY
41	415 45 98-01	Tapping SCREW	130	415 46 59-01	CONTROL FRONT COVER SPRING
41.4	415 45 97-01	THREAD TENSION DIAL (BLUE)	131	415 46 60-01	STUD SHAFT
42	415 45 99-01	WASHER	132	415 46 61-01	LOWER BLADE GUIDE SHAFT
43	415 46 00-01	DIAL CLUTCH	133	415 42 42-01	LOWER BLADE SPRING
44	415 46 01-01	CLUTCH SPRING	134	415 48 00-01	LOWER BLADE HOLDER
45	415 41 49-01	SCREW	135	415 46 63-01	LOWER BLADE
46	415 46 02-01	THREED TENSION RELEASE BLOCK	136	415 48 01-01	FIXED NEEDLE GUARD A
47	728 52 17-05	Screw	137	415 48 02-01	FIXED NEEDLE GUARD B
48	415 46 03-01	THREED TENSION RELEASE SHAFT C	138	415 46 65-01	UPPER BLADE HOLDER GUIDE SHAFT
49	415 46 04-01	THREED TENSION RELEASE PLATE	139	415 46 66-01	UPPER BLADE KNOB
50	415 46 05-01	SPRING PIN	140	415 46 67-01	SPRING PIN
51	415 41 24-01	PRESSER LIFTer CAM	141	415 48 03-01	UPPER BLADE HOLDER GUIDE
52	415 46 06-01	PRESSER LIFTER SHAFT	142	415 46 69-01	UPPER BLADE PRESSER SPRING
53	415 41 26-01	SHAFT PRESSER	143	415 46 70-01	UPPER BLADE DRIVING PLATE
54	415 45 09-01	SCREW	144	415 46 71-01	UPPER BLADE HOLDER
55	415 32 64-01	STOP RING	145	415 48 04-01	UPPER BLADE ARM
56	415 46 07-01	TENSION RELEASE CAM	146	415 46 73-01	UPPER BLADE
57	415 41 22-01	ScREW	147	415 33 05-01	WASHER
58	415 46 08-01	PRESSER FOOT LEVER	148	415 30 38-01	SCREW
59	415 31 79-01	NEEDLE BAR LINK	149	415 48 05-01	SAFETY MECHANISM
60	415 31 87-01	STOP RING	150	415 46 75-01	UPPER BLADE DRIVING ARM SHAFT
61	415 47 97-01	THREED TAKE-UP	151	415 48 06-01	MOVABLE STITCH TONGUE ASSEMBLY
62	415 30 98-01	SPRING WASHER	152	415 46 77-01	STITCH PRESSER
63	415 41 39-01	SCREW	153	415 46 78-01	STITCH SPRING
64	415 41 30-01	CRANK SHAFT BUSHING	154	415 46 79-01	STITCH TONGUE HOLDER ASSEMBLY
65	415 46 10-01	SPRING PIN	155	415 45 04-01	SCREW
66	415 32 03-01	SCREW	156	415 46 80-01	STITCH CHANGING KNOB
67	415 46 11-01	NEEDLE BAR CRANK SHAFT	157	415 46 81-01	STITCH PLATE
68	415 46 12-01	NEEDLE BAR CRANK	158	415 46 82-01	STOP RING
69	415 41 36-01	NEEDLE BAR LINK SHAFT A	159	415 46 83-01	SCREW
70	415 46 13-01	NEEDLE BAR DRIVING LEVER	160	415 42 09-01	Nut
71	415 41 34-01	Upper shaft BUSHING PRESSER	161	415 48 07-01	UPPER BLADE DRIVING ARM
72	415 46 14-01	SEW-LIGHT ASSEMBLY	162	415 46 85-01	UPPER BLADE ECCENTRIC WHEEL
73	415 46 15-01	SCREW	163	415 43 00-01	UPPER BLADE LINK
74	415 34 39-01	SEW-LIGHT bulb	164	415 32 56-01	LOOPER LEVER SHAFT BUSH.
75	415 46 16-01	SEW-LIGHT PLATE	165	415 48 08-01	HORIZONTAL LEVER COLLAR
76	415 41 72-01	SEW-LIGHT SWITCH CAP	166	415 48 09-01	HORIZONTAL LEVER
77	415 41 73-01	SCREW	167	415 48 10-01	HORIZONTAL LEVER SHAFT
78	415 47 64-01	SENSOR ASSEMBLY	168	415 48 11-01	DOUBLE CHAIN LOOP THREAD ASS.
79	415 46 17-01	DIFFERENTIAL ADJUSTING LINK C	169	415 48 12-01	DOUBLE CHAIN LOOP THREAD SPRING
80	415 44 39-01	SCREW	170	415 48 13-01	DOUBLE CHAIN LOOP THREAD ASS.
81	415 45 12-01	Wave WASHER	171	415 47 27-01	TAPPING SCREW
82	415 46 19-01	SPACER	172	415 48 14-01	THREAD GUIDE SPRING PRESSER PL.
83	415 46 20-01	SET SCREW	173	415 48 15-01	DOUBLE CHAIN LOOPER THREAD LEVER
84	415 46 21-01	MATERIAL PLATE COVER BRACKET	174	415 48 16-01	DOUBLE CHAIN LEVER
85	415 46 22-01	ADJUSTING LINK SHAFT	175	415 42 88-01	Washer



Pos	Part no	Description	Pos	Part no	Description
176	415 46 90-01	LOOPER LEVER FIXING SCREW	262	415 47 30-01	UNDERLOOPER THREAD GUIDE
177	415 48 17-01	DOUBLE CHAIN LOOPER	263	415 48 50-01	D.CHAIN LOOPER THREAD TENSION
178	415 42 81-01	LOOPER LEVER SHAFT BUSH., FRONT	264	415 33 02-01	Nut
179	415 48 18-01	DOUBLE CHAIN LOOPER SHAFT	265	415 48 51-01	Screw
180	415 48 19-01	DOUBLE CHAIN LINK	266	415 48 52-01	THREAD TENSION DISC
181	415 48 20-01	DOUBLE CHAIN DRIVING ARM	267	415 48 53-01	THREAD TENSION DISC
182	415 48 21-01	DOUBLE CHAIN LINK SHAFT A	268	415 48 54-01	DOUBLE CHAIN SPRING
183	415 48 22-01	DOUBLE CHAIN ROD	269	415 48 55-01	D.CHAIN L.THREAD TENSION DIAL
184	415 48 23-01	DOUBLE CHAIN ECCENTRIC WHEEL	270	415 48 56-01	D.CHAIN L.THREAD TENSION shaft
185	415 48 24-01	Screw	271	415 48 57-01	PANEL ASSEMBLY(260-270,277-279)
186	415 48 25-01	DOUBLE CHAIN LINK SHAFT B	272	415 47 69-01	LCD SWITCH
187	415 48 26-01	UNDERLOOPER BALANCE	273	415 47 70-01	KEY BASE ASSEMBLY
188	415 42 76-01	UL ROD ASSEMBLY	274	415 48 58-01	TAKE-UP LEVER COVER
189	415 46 87-01	UNDERLOOPER ROD ECCENTRIC WHEEL	275	415 47 72-01	LCD BASE ASSEMBLY
190	415 44 27-01	LOOPER ROD STUD SHAFT	276	415 47 73-01	INSULATION SHEET
191	415 48 27-01	UNDERLOOPER LEVER SHAFT	277	415 47 33-01	NEEDLE THREAD GUIDE, LEFT
192	415 48 28-01	UNDERLOOPER LEVER	278	415 47 34-01	NEEDLE THREAD GUIDE, RIGHT
193	415 48 29-01	D.CHAIN LOOPERTHREAD TAKE-UP	279	415 47 53-01	NEEDLE THREAD GUIDE
194	415 48 30-01	NEEDLE GUARD PLATE A	280	415 47 74-01	SWITCH KNOB
195	415 48 31-01	NEEDLE GUARD PLATE B	281	415 47 75-01	SPEED CONTROL SWITCH ASSEMBLY
196	415 46 92-01	UNDERLOOPER	282	415 47 76-01	SWITCH HOLDER
197	415 48 32-01	UNDERLOOPER THREAD GUIDE BASE	283	415 41 73-01	SCREW
198	415 42 83-01	Screw	284	415 48 59-01	SEW-LIGHT COVER ASSEMBLY
199	415 48 33-01	UL THREAD GUIDE SLIDE ASSEMBLY	285	415 43 65-01	HANDLE SHAFT
200	415 46 95-01	OVERLOOPER ROD ECCENTRIC WHEEL	286	415 47 36-01	HANDLE
201	415 46 96-01	Overlooper balance	287	415 48 60-01	SPOOL STAND ASSEMBLY
202	415 46 97-01	OVERLOOPER LEVER SHAFT	288	415 33 23-01	Spool pin
203	415 45 16-01	Washer	289	415 30 17-01	SPOOL CUSHION
204	415 32 63-01	OL GUIDE SHAFT	290	415 34 37-01	SPOOL STAND BASE
205	415 48 34-01	OVER LOOPER	291	415 43 94-01	Screw
206	415 46 98-01	SCREW	292	415 43 95-01	Washer
207	415 46 99-01	LOOPER CHANGE BASE	294	415 47 38-01	REAR COVER ASSEMBLY
208	415 47 00-01	LOOPER CHANGE SPRING	295	415 43 91-01	INSULATION WASHER
209	415 47 01-01	LOOPER CHANGE CAM	296	415 48 61-01	THREAD RECTIFIER BODY ASSEMBLY
210	415 47 02-01	SCREW	297	415 48 62-01	SPOOL STAND BASE
211	415 47 03-01	WASHER	298	415 43 93-01	Screw
212	415 34 82-01	OVER LOOPER THREAD GUIDE	299	415 47 78-01	INSULATION COVER PLATE
213	415 47 04-01	OVERLOOPER SHAFT GUIDE	300	415 47 79-01	PC-BOARD
214	415 48 35-01	LOOPER CHANGE LEVER	301	415 47 80-01	INSULATION COVER
215	415 47 05-01	OVERLOOPER SHAFT	302	415 33 15-01	Nut
216	415 30 56-01	OVERLOOPER lower SHAFT	303	415 43 89-01	Nut
217	415 48 36-01	LOOPER CHANGE BASE	304	415 43 78-01	Band
218	415 48 37-01	LOOPER CHANGE SHAFT	305	415 47 81-01	JACK ASSEMBLY
219	415 48 38-01	LOOPER CHANGE KNOB	305	415 47 82-01	JACK ASSEMBLY (GERMANY)
220	415 48 39-01	CHANGE GUIDE SHAFT	306	415 47 83-01	INLET SWITCH ASSEMBLY
221	415 33 98-01	Spring	307	415 43 80-01	Jack nut
222	415 44 21-01	Screw	308	415 47 84-01	BELT COVER E
223	415 47 06-01	LOOPER THREAD TAKE-UP LEVER	309	415 33 28-01	Screw
224	415 47 07-01	UL THREAD TAKE-UP LEVER	310	415 43 83-01	Spring washer
225	415 47 08-01	SCREW	311	415 33 26-01	Washer
226	415 43 09-01	HANDWHEEL	312	415 48 68-01	MOTOR (230 V)
227	415 43 08-01	SPRING PIN	313	415 47 49-01	DUST BOX
228	415 32 72-01	STOP RING	314	415 47 50-01	TIMING BELT
229	415 32 71-01	Washer	315	415 48 63-01	BLADE COVER 2
230	415 32 70-01	DRIVING SHAFT BUSHING, right	316	415 47 51-01	PANEL PLATE SHEET, LEFT
231	415 47 09-01	NEEDLE BAR ECCENTRIC WHEEL	317	415 47 89-01	LCD SHEET
232	415 47 10-01	DRIVING SHAFT	318	415 47 90-01	LEAD WIRE ASSEMBLY #1
233	415 43 02-01	NEEDLE BAR ROD	319	415 47 91-01	LEAD WIRE ASSEMBLY #2
234	415 48 40-01	DRIVING SHAFT BUSHING, LEFT	320	415 47 92-01	CORD COVER
235	415 43 03-01	NEEDLE BAR ROD SHAFT	321	415 47 71-01	TAPPING SCREW
236	415 47 11-01	FRONT COVER HINGE	322	415 41 67-01	Screw
237	415 44 63-01	FRONT COVER GUIDE SHAFT	323	415 47 54-01	SCREW
238	415 32 98-01	Stop ring	415 34 44-01	Foot control	
239	415 32 96-01	Spring	415 48 66-01	Power cord Europe	
240	415 44 68-01	FRONT COVER HOOK	415 48 67-01	Power cord U.K.	
241	415 44 59-01	Screw			
242	415 48 41-01	BLADE COVER 1			
243	415 48 42-01	BLADE COVER BRACKET	ACCESSORIES		
244	415 48 43-01	FRONT COVER ASSEMBLY (236-244)	415 47 55-01	ACCESSORY BOX WITHOUT ACCESS.	
244.1	415 48 44-01	FRONT COVER	415 44 06-01	SCREWDRIVER	
244.2	415 48 45-01	Thread guide control plate	412 28 90-01	SCREWDRIVER SMALL	
244.3	415 48 46-01	FRONT COVER PLATE	415 44 07-01	PINCETTE	
244.3	415 48 47-01	FRONT COVER PLATE	415 30 13-01	MACHINE BRUSH	
245	415 34 33-01	Cushion A	415 44 10-01	SPOOL CAP	
246	415 44 02-01	Spacer	415 30 15-01	SPOOL NET	
247	415 45 06-01	Screw	415 44 12-01	OILER	
248	415 47 17-01	OIL PAN	OPTIONAL PRESSER FEET		
249	415 47 18-01	CONTROL FRONT COVER	415 48 64-01	BLIND STITCH PRESSER FOOT	
250	415 48 48-01	CONTROL COVER PLATE	415 47 61-01	PEARL SEQUENCE PRESSER FOOT	
251	415 47 20-01	MATERIAL PL. COVER HINGE SHAFT	415 47 62-01	PIPING PRESSER FOOT	
252	415 47 24-01	MATERIAL PLATE COVER B	415 47 63-01	ELASTIC PRESSER FOOT	
252	415 47 21-01	MATERIAL PLATE COVER HINGE	OPERATING MANUALS		
253	415 47 22-01	MATERIAL PLATE FRONT COVER	412 39 98-05	Operating manual SWE/FIN	
254	415 47 23-01	MATERIAL PLATE COVER SPRING	412 39 98-15	Operating manual DAN/NOR	
256	415 45 08-01	Screw	412 39 98-25	Operating manual FRENCH/DUTCH	
257	415 48 49-01	NEEDLE PLATE ASSEMBLY	412 39 98-26	Operating manual ENGLISH	
258	415 30 37-01	Screw	412 39 98-35	Operating manual GER/ITA	
259	415 47 26-01	INNER COVER ASSEMBLY	SERVICE TOOL		
260	415 47 28-01	PANEL LOOPER THREAD GUIDE	415 48 65-01	Service gauge	
261	415 47 29-01	OVERLOOPER THREAD GUIDE			

